

How To

MAKE CHRISTMAS CARDS



Get Started

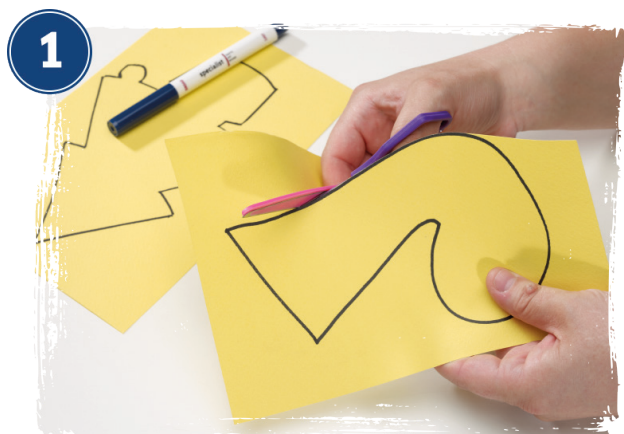
WHAT YOU'LL NEED

CR298
Primary Collage Pack

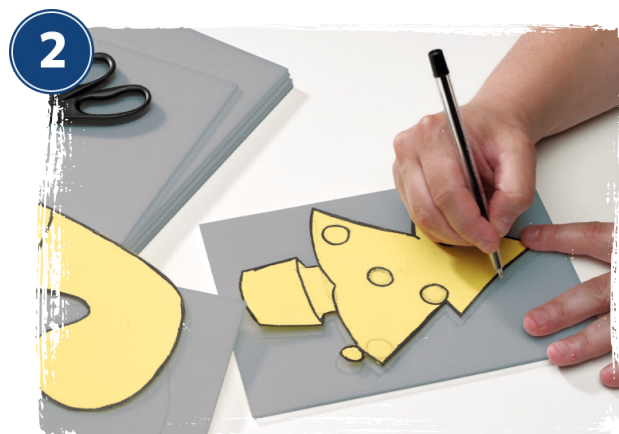


Step by Step

LET'S CREATE



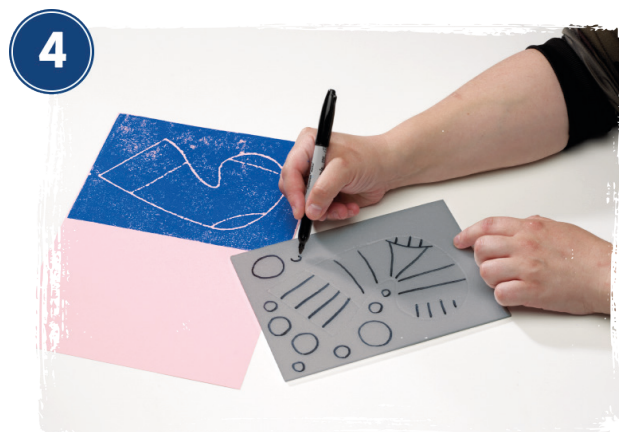
1 Draw a Christmas stocking onto a piece of card and cut it out. We've also drawn a Christmas tree with baubles on it standing in a tub. Cut around the edges. This will be your template.



2 Place your template on the Quickprint sheet. We've used A5 pieces by cutting the A4 sheets in half. Using a pointed tool (a biro is ideal) follow the edge of the template to score the shape into the Quickprint. Make sure you score around the whole template shape, but try not to poke through to the other side of the Quickprint.



3 Cover a roller with ink and roll a layer onto the surface of the Quickprint sheet where your design is. Once you've got an even thin covering, take a piece of card and lining it up carefully, place it down onto your inked sheet. Press down smoothly and firmly, then slowly peel back a corner of the card until it is completely detached from the Quickprint sheet.



4 Take a number of prints from your first Quickprint sheet, then clean the Quickprint with some water and dry it as much as possible. Add more detail to the design on the Quickprint sheet. Before scoring the sheet, it is helpful to use a felt tipped pen first as a guide, so you can use these coloured lines to show how the design will look at each stage. We've added more stripes and put lots of snowballs around the stocking.



5 Ink up the Quickprint sheet again with a different colour and repeat the printing process as outlined in step 3. Now you have your two-colour Christmas card! If you have time you can clean the Quickprint again adding further detail and then print again using another colour!

Your Diorama is complete!
Tip! - You can make dioramas on any theme. Why not try Christmas or Easter?